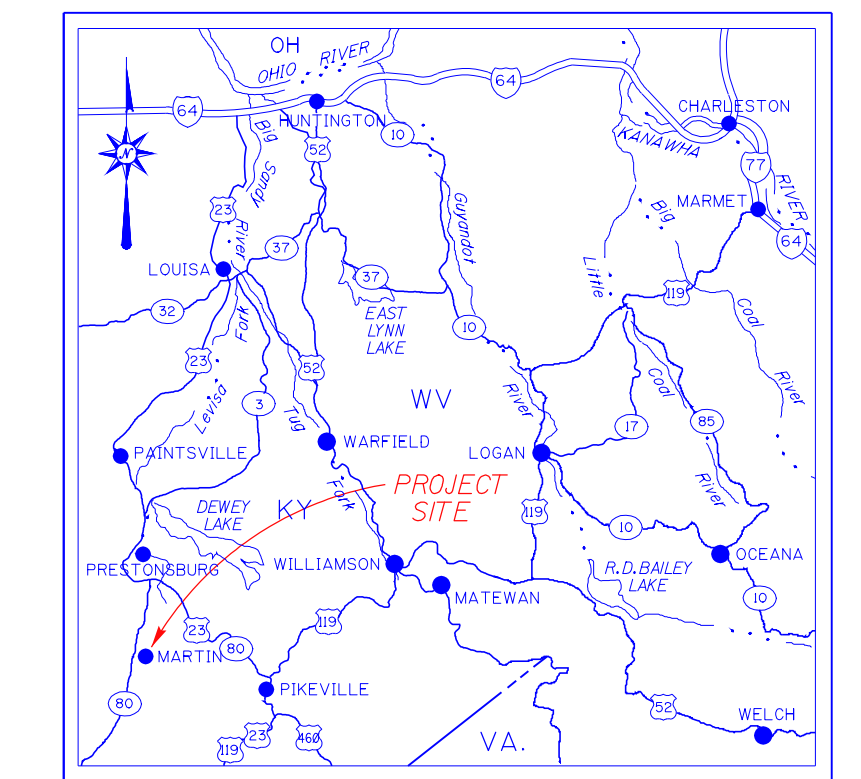
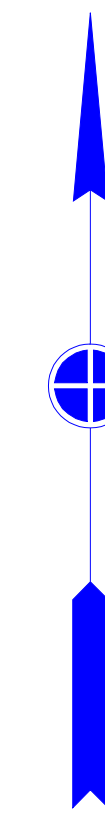
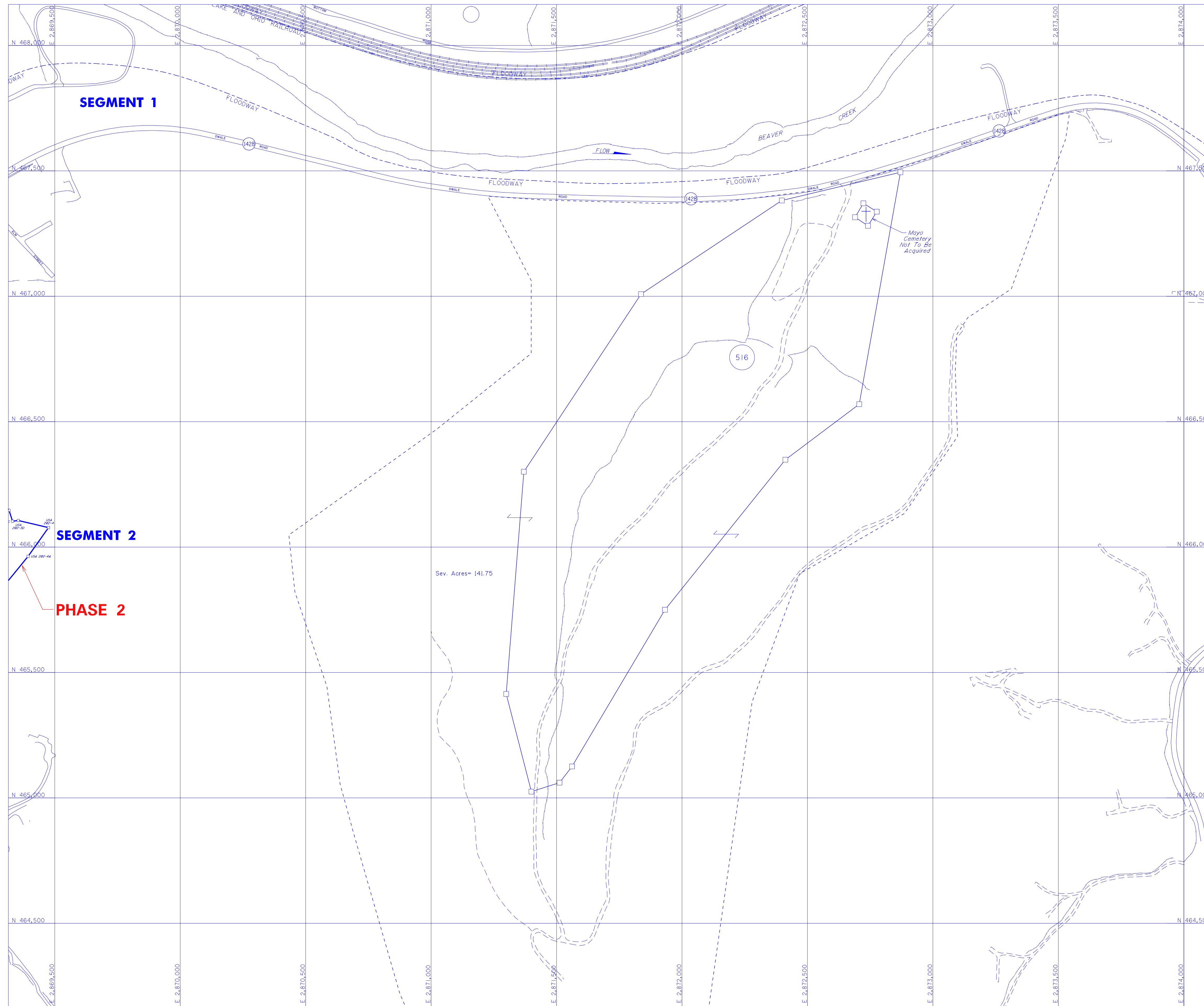


TRACT REGISTER					
AUTH.	TRACT NO.	LAND OWNER	ACREAGE		REMARKS
			FEE	EASMT.	
	516	HARRY MAYO, JR.	40.25		DELETED PER REPP MEMO 5 AUG 2002
	516	HARRY MAYO, JR.	40.25		FEE EXCLUDING MINERALS



VICINITY MAP
SCALE IN MILES

LANDS TO BE CONDEMNED

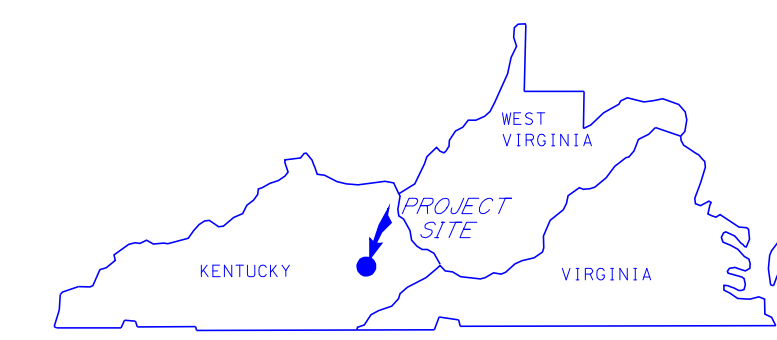
PRELIMINARY

PROJECT MAP (CONTINUATION SHEET)

DEPT. OF THE	ARMY	USING SERVICE	CORPS OF ENGINEERS
LOCATION OF PROJECT		TRANSPORTATION FACILITIES	
STATE	KENTUCKY	RAILROADS	
COUNTY	FLOYD	STATE ROADS	
DIVISION	GREAT LAKES & OHIO RIVER	FEDERAL ROADS	
DISTRICT	HUNTINGTON	AIR LINES	
ARMY AREA	SECOND		
MILES		OF	
MILES		OF	

SEGMENT 5B

DEPARTMENT OF THE ARMY U.S. ARMY ENGINEER DISTRICT, HUNTINGTON CORPS OF ENGINEERS GREAT LAKES AND OHIO RIVER DIVISION			
REAL ESTATE LEVISA FORK RIVER TOWN OF MARTIN NONSTRUCTURAL PROJECT BORROW / SPOIL SITE			
DRAWN BY: HPC TRACED BY: KVS CHECKED BY: HPC SUBMITTED BY: CHIEF PLANNING & CONTROL BR RECOMMENDED BY:	APPROVED BY: _____ _____ CHIEF, REAL ESTATE DIVISION COL., CORPS OF ENGINEERS, DISTRICT ENGINEER DATE: _____ OFFICE, CHIEF OF ENGINEERS, WASHINGTON 25, D. C.		
MICROFILMED DATE AUDIT APPROVED DATE REVISIONS BY		SCALE IN FEET 200 0 200 400 SHEET <u>6</u> OF <u>9</u> DRAWING NO. _____	



STATE INDEX

NOTES:
 THIS SEGMENT MAP WAS PREPARED BY THE U.S. ARMY CORPS OF ENGINEERS REAL ESTATE DIVISION AND ENGINEERING DIVISION, BY THE USE OF DEED DESCRIPTIONS AND ACTUAL SURVEY.
 A COMPUTER AIDED DESIGN AND DRAFTING SYSTEM HAS BEEN USED WITH INTERGRAPH MICROSTATION 95 SOFTWARE. ALL FILES RELATED TO THIS PROJECT ARE STORED IN THE HUNTINGTON DISTRICT REAL ESTATE PROJECT FILES FOR THE TOWN OF MARTIN.
 HORIZONTAL POSITIONS ARE BASED ON THE KENTUCKY STATE PLANE COORDINATE SYSTEM, SOUTH ZONE.
 ONLY THOSE PROPERTY LINES SHOWN BY ACTUAL SURVEY ARE VERIFIED.
 ALL OTHER PROPERTY LINES AND TRACT INFORMATION DEPICTED ON THIS MAP WERE TAKEN FROM STATE TAX MAPS AND USED FOR INFORMATION PURPOSES ONLY.
 THE LANDOWNERS MEETING FOR THIS PROJECT WAS HELD ON 04 DECEMBER 2001.

ACQUISITION AUTHORIZATION
