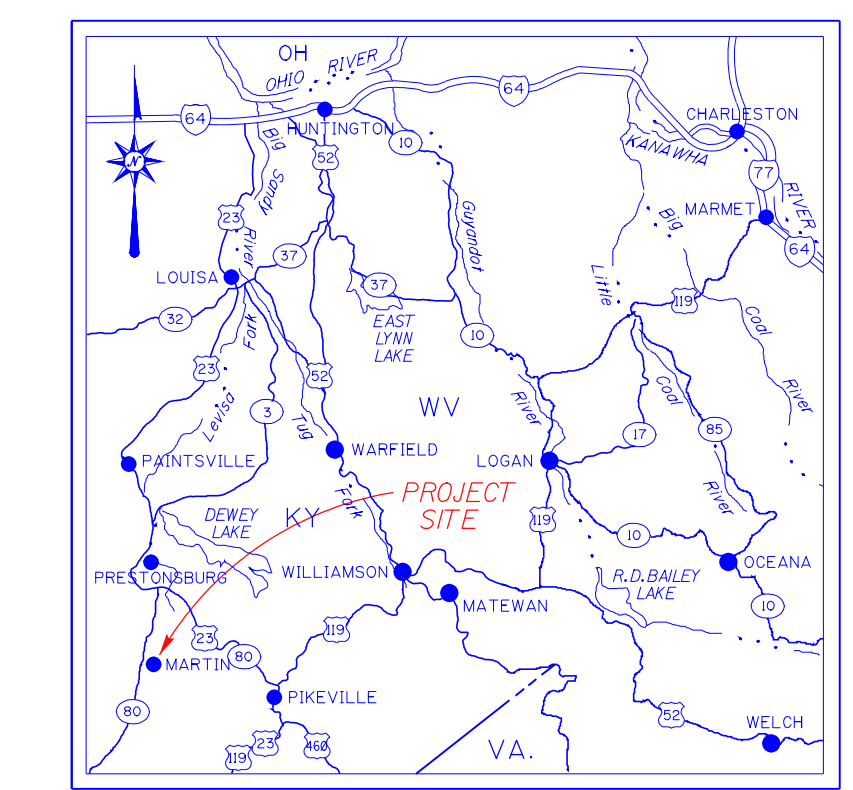
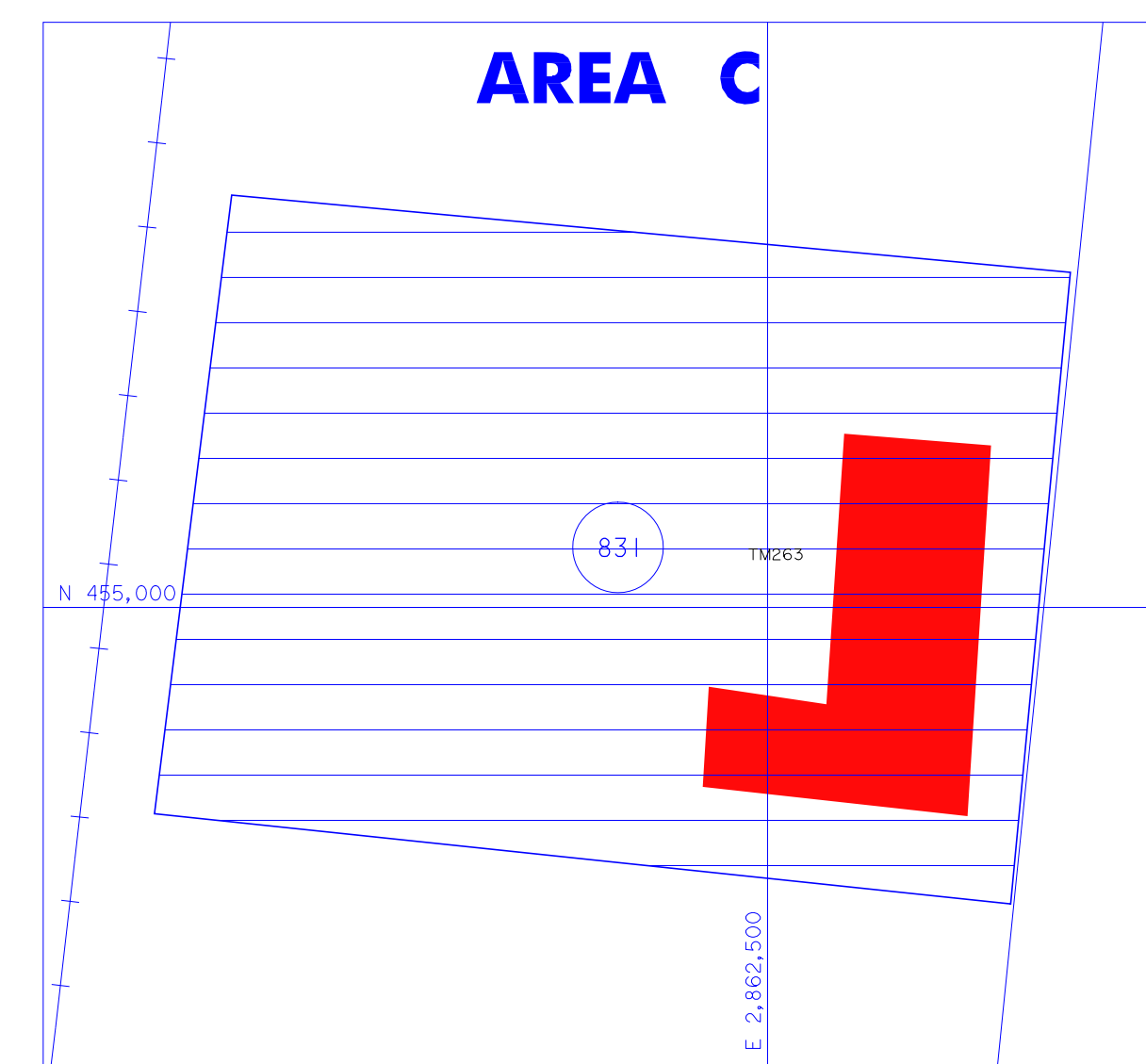
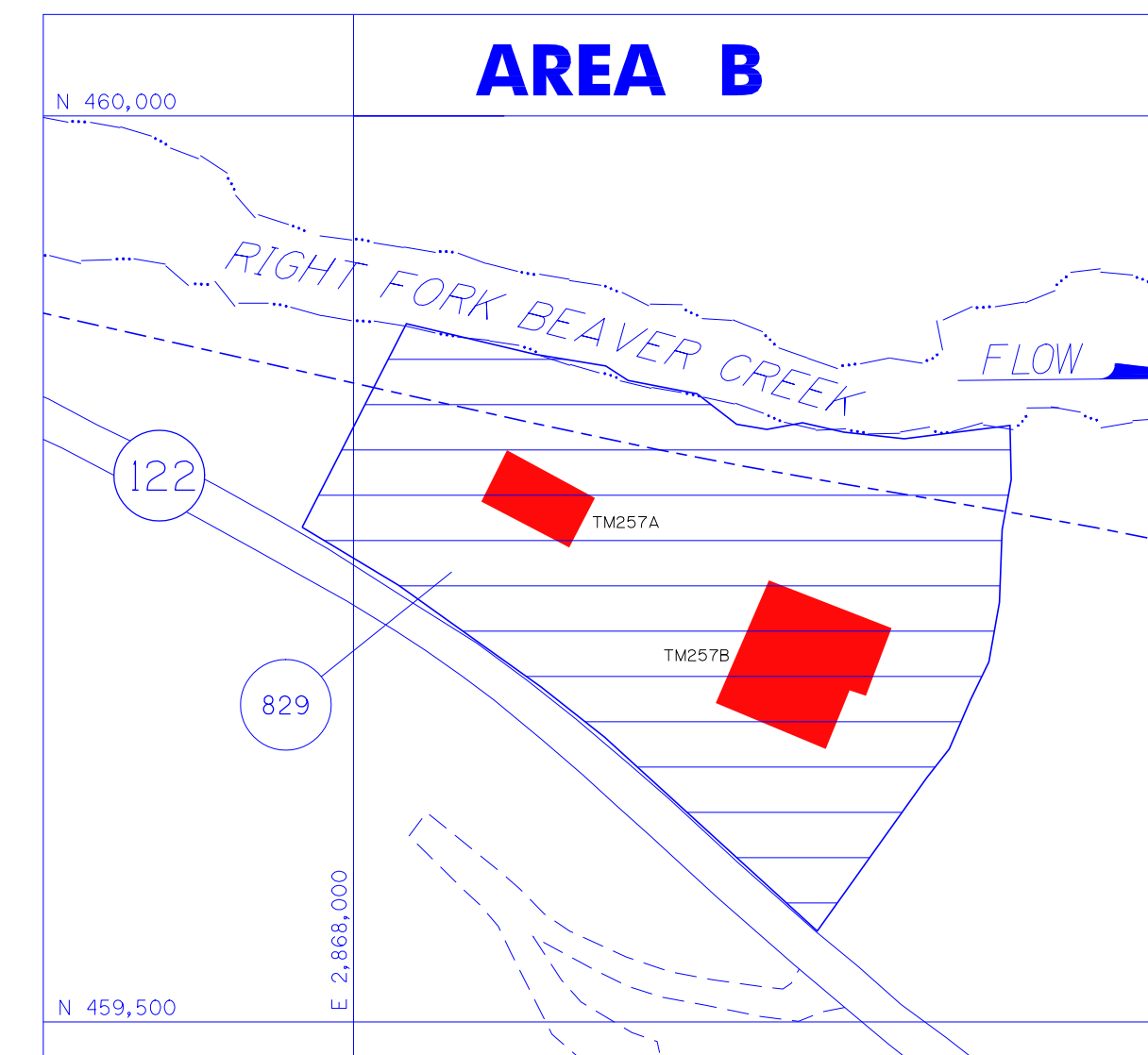


TRACT REGISTER

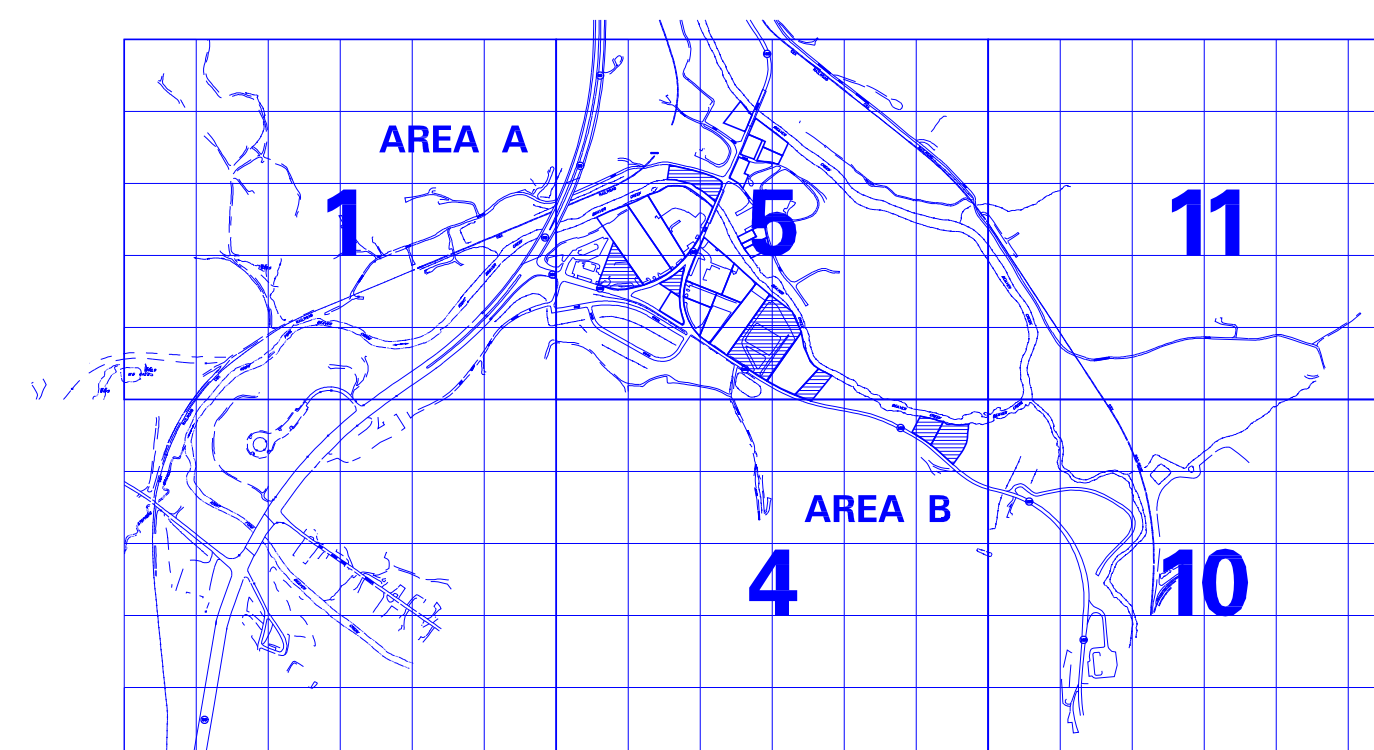
AUTH.	TRACT NO.	LAND OWNER	ACREAGE		REMARKS
			FEE	EASMT.	
	801	DR. DEWEY OSBORNE			
	802	TRUMAN MESSER			
	803	FIRST COMMONWEALTH BANK			
	804FP	TINA M. OUSLEY			
	806	DENVER HALL, ET UX			
	807	CLAUDE ANTHONY HALBERT			
	808	WILLIAM RATLIFF			
	809FP	KENNETH RUDDER, SR., ET UX			
	811	WILLIAM RATLIFF, ET UX			
	812	TAYLOR PRICE, ET UX			
	813	E. C. MOORE, ET UX			
	814	GEORGE BARNETT			
	816	E. P. GRIGSBY			
	817	MASON MOORE			
	818	OLIN ELLIOTT			
	819	FIRST GUARANTY NATIONAL BANK			
	821	ROGER TACKETT			
	822	M & B PROPERTIES, LLC			
	823FP	REWORTH CORPORATION			
	824	TRIANGLE PROPERTIES			
	826	HALL FUNERAL HOME			
	827	JOHN C. HALL ENTERPRISES, INC.			
	828	JERALD F. COMBS			
	829	TAYLOR HARRIS			
	831	UNKNOWN			
	832	BETTY HALL			
	844	COMMONWEALTH OF KENTUCKY	0.60		FUTURE FIRE DEPARTMENT



VICINITY MAP
SCALE IN MILES

LEGEND

- [Red Box] STRUCTURES ELIGIBLE FOR ACQUISITION
- [Green Box] STRUCTURES ELIGIBLE FOR FLOODPROOFING
- [Hatched Box] SUSPECTED HTRW



PRELIMINARY PROJECT MAP (CONTINUATION SHEET)

DEPT. OF THE ARMY	USING SERVICE	CORPS OF ENGINEERS
LOCATION OF PROJECT	TRANSPORTATION FACILITIES	
STATE	KENTUCKY	RAILROADS
COUNTY	FLOYD	STATE ROADS
DIVISION	GREAT LAKES & OHIO RIVER	FEDERAL ROADS
DISTRICT	HUNTINGTON	AIR LINES
ARMY AREA	SECOND	
MILES	OF	
MILES	OF	

SEGMENT 8

DEPARTMENT OF THE ARMY
U.S. ARMY ENGINEER DISTRICT, HUNTINGTON
CORPS OF ENGINEERS
GREAT LAKES AND OHIO RIVER DIVISION

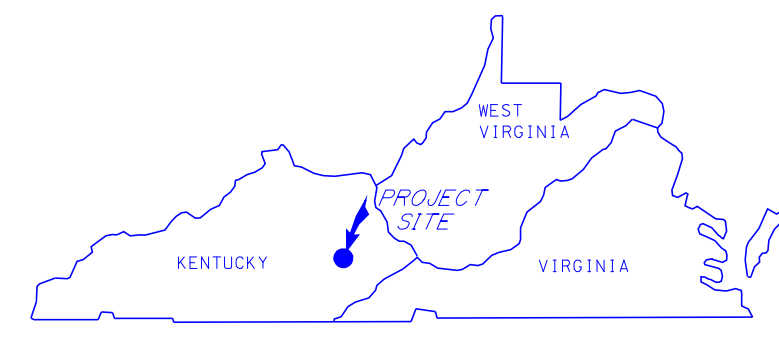
**REAL ESTATE
LEVISA FORK RIVER
TOWN OF MARTIN
NONSTRUCTURAL PROJECT**

DRAWN BY: HPC
TRACED BY: KVS
CHECKED BY: HPC
SUBMITTED BY:
CHIEF PLANNING & CONTROL BR
RECOMMENDED BY:
APPROVED BY: _____ DATE: _____

CHIEF, REAL ESTATE DIVISION COL., CORPS OF ENGINEERS, DISTRICT ENGINEER DATE: _____
OFFICE, CHIEF OF ENGINEERS, WASHINGTON 25, D. C.

SCALE IN FEET
100 0 100 200
SHEET 9 OF 9 DRAWING NO. _____

NOTES:
THIS SEGMENT MAP WAS PREPARED BY THE U.S. ARMY CORPS OF ENGINEERS REAL ESTATE DIVISION AND ENGINEERING DIVISION, BY THE USE OF DEED DESCRIPTIONS AND ACTUAL SURVEY.
A COMPUTER AIDED DESIGN AND DRAFTING SYSTEM HAS BEEN USED WITH INTERGRAPH MICROSTATION 95 SOFTWARE. ALL FILES RELATED TO THIS PROJECT ARE STORED IN THE HUNTINGTON DISTRICT REAL ESTATE PROJECT FILES FOR THE TOWN OF MARTIN.
HORIZONTAL POSITIONS ARE BASED ON THE KENTUCKY STATE PLANE COORDINATE SYSTEM, SOUTH ZONE.
ONLY THOSE PROPERTY LINES SHOWN BY ACTUAL SURVEY ARE VERIFIED.
ALL OTHER PROPERTY LINES AND TRACT INFORMATION DEPICTED ON THIS MAP WERE TAKEN FROM STATE TAX MAPS AND USED FOR INFORMATION PURPOSES ONLY.
THE LANDOWNERS MEETING FOR THIS PROJECT WAS HELD ON 04 DECEMBER 2001.



STATE INDEX

ACQUISITION AUTHORIZATION

MICROFILMED	DATE AUDIT APPROVED	DATE	REVISIONS	BY